

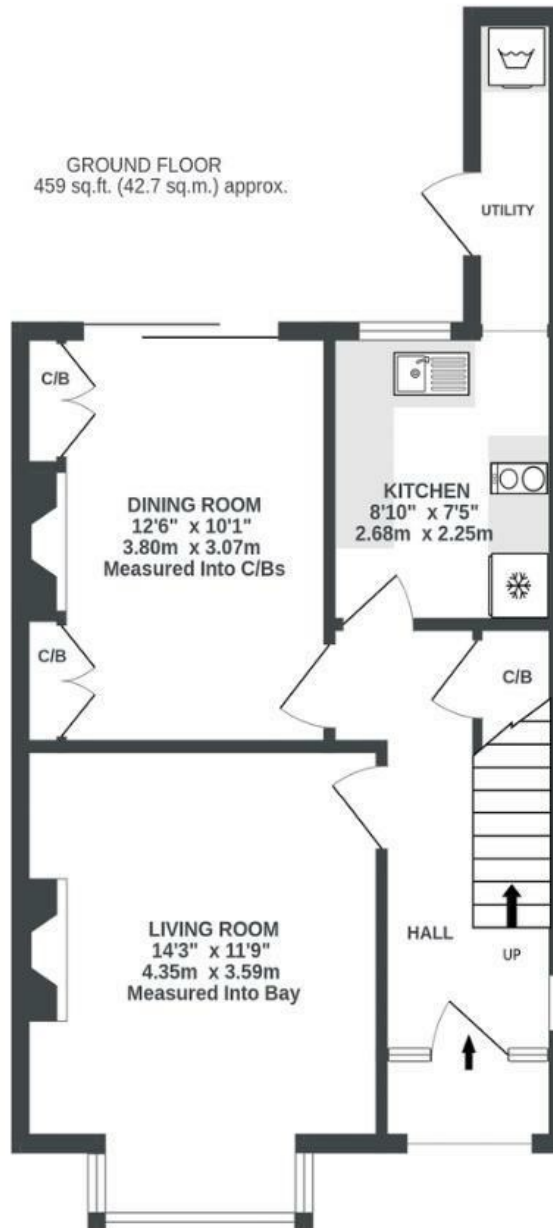
Jersey Avenue

BRISLINGTON

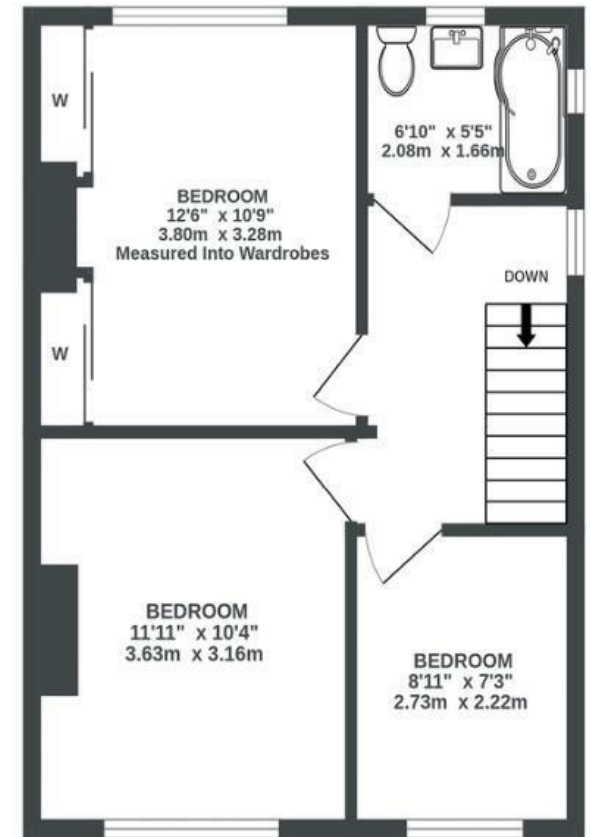
APPROXIMATE FLOOR AREA
81.9 SQM / 882 SQFT



GROUND FLOOR
459 sq.ft. (42.7 sq.m.) approx.



1ST FLOOR
422 sq.ft. (39.2 sq.m.) approx.



Illustrations are for reference purposes only, measurements are approximate, not to scale.

Boardwalk

Jersey Avenue

BRISLINGTON, BRISTOL

£

£385,000

zzz

3 Bedrooms



BS4 4QU



1 Bathrooms

"I have worked hard to revive the character of this 1930's semi whilst bringing it up to date. I have put a lot of love into the garden to create a private mindful retreat and hope the next owners will go on to enjoy it as a relaxing and entertaining space. It's a quiet neighbourhood with close by walks around Nightingale Valley or Eastwood Farm Nature Reserve, often followed by a trip to Beese's Tea Room. Or I can easily get into the city on the No.1 bus for a evening out."

